

Preliminary Details

Cavendish Court 11-15 Wigmore Street, W1U 1PF

1st Floor Fully Fitted Office Space To Let

2,886 sq.ft.



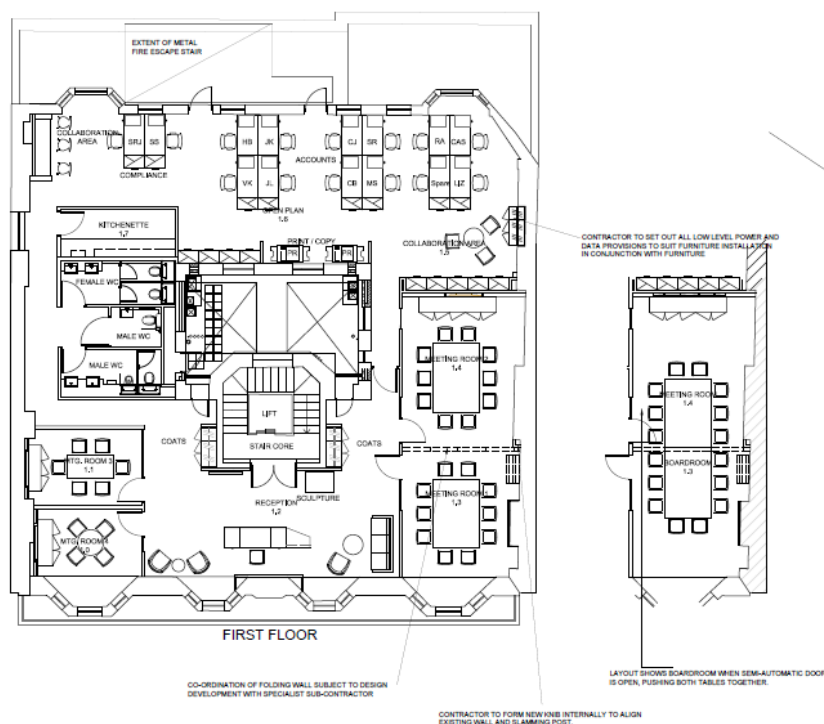
www.whitedrucebrown.com

020 7467 5997

Fax 020 7224 5212



Communications are excellent with both Bond Street (Jubilee, Central and Elizabeth lines), Oxford Circus (Victoria, Bakerloo and Central lines) and Regent's Park (Bakerloo line) underground stations all within a few minutes' walk.



AMENITIES

- VRF air conditioning
- Fully accessible raised floor
- Metal tile suspended ceiling
- LED lighting
- 24 hour access
- 1 x 6 person passenger lift
- Manned reception
- Furniture also available by separate request
- EPC rating – B42

TENANCY

1st Floor 2,886 sq.ft. 268 m²

LOCATION

The property occupies a prominent location with frontage to Wigmore Street, just off Cavendish Square. It is well positioned for an occupier to enjoy a wide range of retail and leisure facilities and excellent connectivity with both Oxford Circus and Bond Street tube stations being a short walk away.

- 2 minute walk to Oxford Circus
- 5 minute walk to Bond Street
- 7 minute walk to Tottenham Court Road
- 10 minute walk to Marble Arch

TERMS

Lease New lease available direct from the landlord.

Rent £65 p.s.f.

Rates To be confirmed

Service Charge To be confirmed

CONTACTS

Contact Joint Sole Agent:

Ian Franklin – White Druce & Brown
020 7467 5997
0777 5516 540
ianfranklin@whitedrucebrown.com

Ian Bradshaw – Edward Charles
0746 8524 486